

Introducing New Range of Internal Doors





Thinking out of box and developing revolutionary products has become a way at Sintex. Taking this tradition further, Sintex now presents Rambo Door, a factory made alternative to other types of not-so-reliable doors.

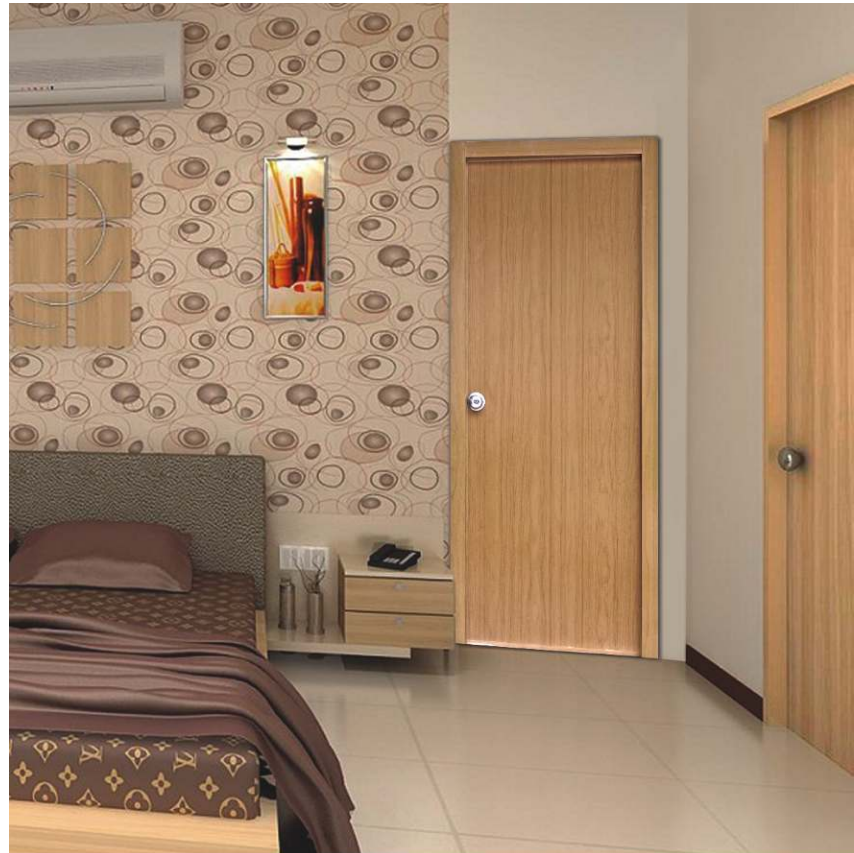
Made of extremely durable and sturdy material, Rambo Doors are ideal for all kinds of openings. You may use it at the front door, bathroom door, toilet door, kitchen door and any internal door. Available in wide range of looks and sizes, Rambo Doors are suitable for all your needs.

UNIQUE FEATURES

- Water proof & Rot Proof
- Weather proof & Termite proof
- Strong & Durable
- Better insulation
- Custom sizes & colors are also available

SPECIFICATIONS

- 30mm thick steel door
- Core of the door filled with PUF / Honeycomb
- Doors are provided with matching steel frame
- Doors are available with hinges and lock



Cherry



Maple

Available colors:

- Cherry & Maple

RANGE

Product

1. Rambo Gold : With Honeycomb core
2. Rambo Platinum : With PUF core

Thickness

: 30mm

Sizes

- 6.50' x 2.50'
- 6.75' x 2.50'
- 6.75' x 2.75'
- 7.00' x 3.00'

Above sizes are inclusive of frame

The specifications and information given herein are in good faith but without warranty.



SINTEX INDUSTRIES LIMITED

PLASTICS DIVISION

KALOL (N. GUJARAT) 382 721. INDIA
 Phone : 253500, Fax : (02764) 253800
 E-mail : plastic@sintex.co.in
 www.sintex-plastics.com